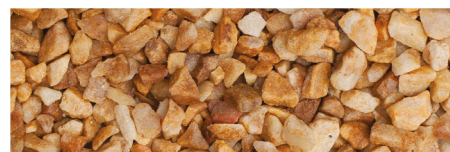
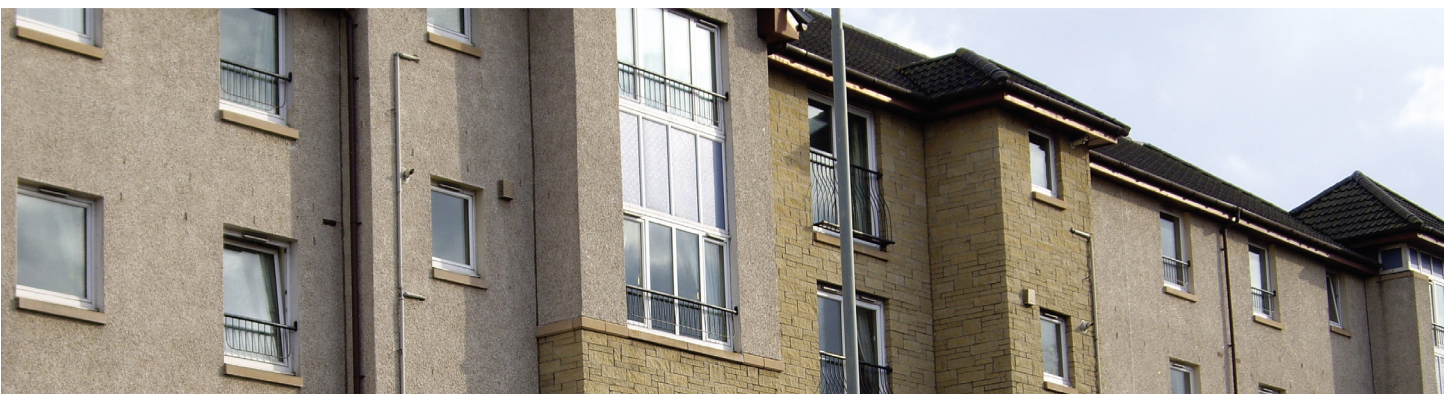


The Pebble Dashing Range



LONG RAKE SPAR  
Specialist Decorative Aggregates

Decorative Aggregates  
and Landscaping Stone





**ASHTON CREAM** 3-8mm  
RIS \*



**BARLEY CORN** 3-8mm  
RIS \*



**BLACK AND WHITE 10/90**  
3-8mm RIS \*



**BUFF QUARTZ** 3-8mm  
RIS \*



**CANTERBURY SPAR** 3-8mm  
RIS \*



**CORN FLINT** 3-8mm  
RIS \*\*\*



**DERBYSHIRE SPAR** 3-8mm  
RIS \*



**FESTIVAL** 3-8mm  
RIS \*



**HARVEST** 3-8mm  
RIS \*



**ICE BLUE** 3-8mm  
RIS \*



**MULTI MIX** 3-8mm  
RIS \*



# DASHING RANGE

An extensive selection of bespoke blends and traditional dashing aggregates are supplied for external wall finishes or rough cast. Supplied in a 3-8mm size.



**NORDIC** 3-8mm  
RIS \*



**ONYX** 3-8mm  
RIS \*



**POLAR WHITE** 3-8mm  
RIS \*



**RED AND WHITE 10/90**  
3-8mm  
RIS \*



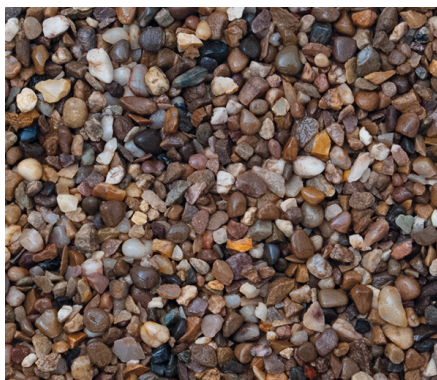
**SEVILLE** 3-8mm  
RIS \*



**SIENNA** 3-8mm  
RIS \*



**SUNRISE** 3-8mm  
RIS \*



**TRENT PEA** 3-8mm  
RIS \*\*\*



**TUSCAN BEIGE** 3-8mm  
RIS \*

This range is supplied in 25kg bags, which can be delivered across the UK and ROI.



## TECHNICAL DATA EXPLAINED

### Batching

We strongly recommend that sufficient aggregate is combined and mixed together in one batch to cover a complete elevation - no aggregate should be directly applied from the bag. This negates the potential risk of patching or colour and sizing changes, which can be evident within any natural occurring aggregate.



### Rust Staining

Some of the gravel and shingles supplied may occasionally contain minor concentrates of iron minerals, which upon weathering may result in localised discolouration/rust staining within the gravel deposits. This does not affect the performance of the finish or render in anyway, other than aesthetically. As such potential instances and occurrences are out of our control. Long Rake Spar cannot be held responsible for any loss or damage suffered as a result of rust staining. However, by way of guidance to users of our products, we have included a risk of iron staining (RIS) assessment on our range of gravels and shingles. This guide is purely a subjective assessment, based on our own experiences with these products and may be subject to change as our database expands. The scale is defined as follows:

- \* No likelihood of any rust staining.
- \*\* No previous recorded instances of rust staining within this product.
- \*\*\* Potential for rust staining within this rock type with recorded instances.



### Coverage

Approximately 12kgs per square metre is the average coverage rate of our aggregates.

### Environmental Policy

Our environmental policy dictates that we only supply ethically sourced materials from sustainable deposits being operated within current legislation and ecological parameters. We also aim to source recycled products or industrial bi-products wherever possible.



/longrakespar1



/longrakespar



/long-rake-spar-co-ltd



Stockists  
Nationwide